

Private spas

In our homes, the bathroom is the one place where we can truly escape from the demands of daily life, even if it's just for an hour or two. We went searching for five beautiful bathrooms to inspire you to create your own personal retreat

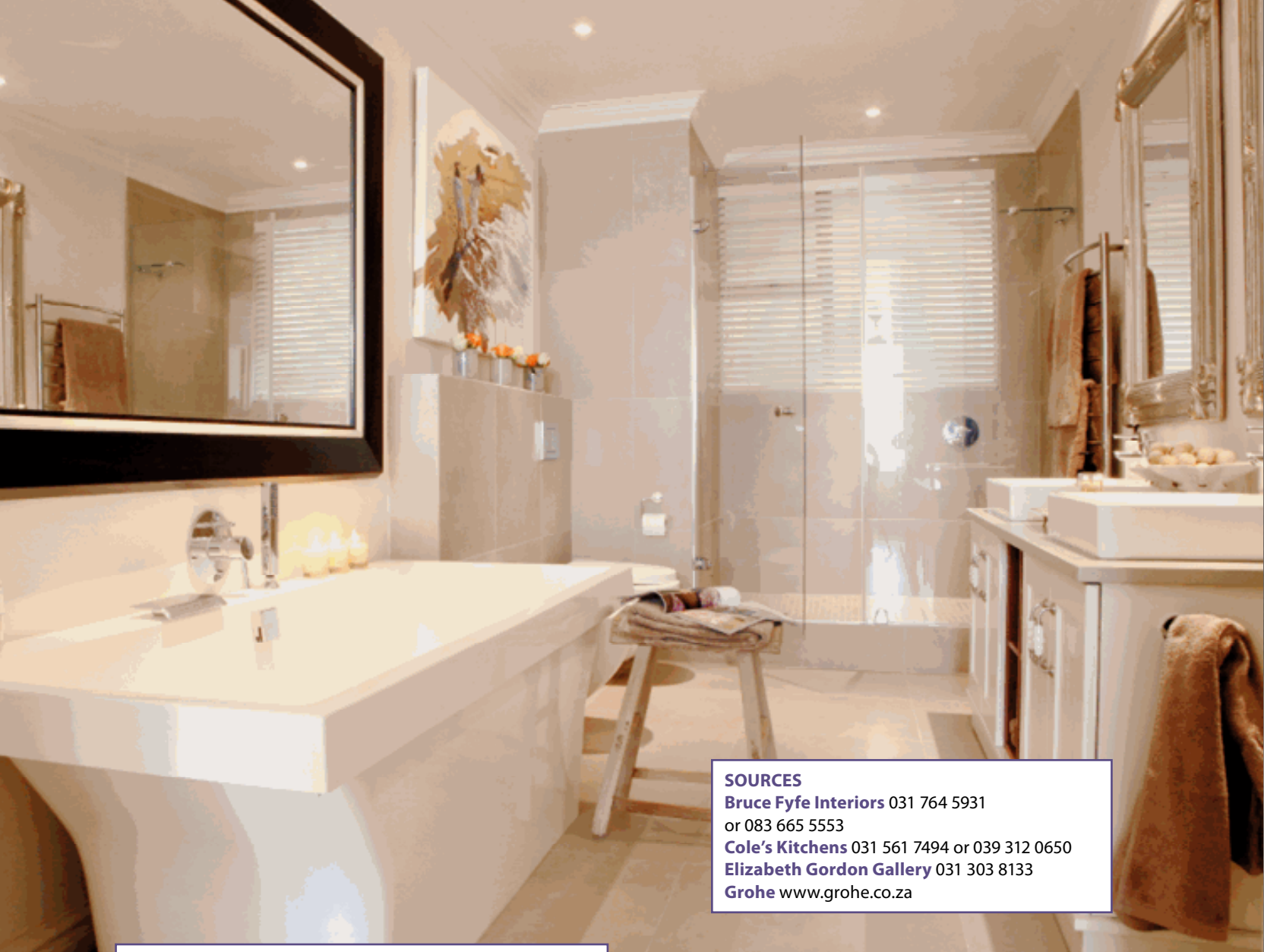
ROMANTIC NOTIONS

Anne Hartmann of Hartmann & Keppler created the perfect retreat in the master bathroom of her Johannesburg home. American shutters create a clean and contemporary backdrop, but still allow you to admire the view of the garden while soaking in the Victorian-styled slipper bath, from Ferreiras Decor World. To the left and the right are mirror-inlaid custom-built vanities, which give Anne and her husband, Robert, their own spaces. The wall sconces with ivory silk shades, the Venetian mirrors and the armchair are from Hartmann & Keppler, the *faux* potted orchid is from Cottage Flowers and the Chinese stools are from Norick Interiors. >

TEXT ANDREW MACKENZIE PHOTOGRAPHS CHRISTOPH HOFFMANN

SOURCES

Cottage Flowers 011 325 4247/8/9
 Ferreiras Decor World 011 699 3500
 Hartmann & Keppler 011 463 5005
 Norick Interiors 011 444 5606



SOURCES
Bruce Fyfe Interiors 031 764 5931
 or 083 665 5553
Cole's Kitchens 031 561 7494 or 039 312 0650
Elizabeth Gordon Gallery 031 303 8133
Grohe www.grohe.co.za

THE BEST OF BOTH WORLDS

This bathroom in Franschhoek combines a sense of peace and luxury with a practical eco-friendly space suitable for an energetic lifestyle. The Passion bath, from Sterlings, rests gently on thick pile carpeting in the soft glow of an overhead chandelier. The narrow room is cocooned with grey curtains hanging softly from just under a clerestory window with a view to the mountains.

Beyond the drapes is a large, open shower room with decked flooring, a glass roof and a door leading out to the garden. The shower fitted with a large rain shower rose from Sterlings is flanked by a pair of matching vanities with bamboo table-top basins, also from Sterlings. The soft decorative elements were conceived by Colonial House Design. ▷

TEXT AND PHOTOGRAPHS DIANA WEIMYSS



PAMPERED IN STYLE

This elegant bathroom in an apartment in Umhlanga, KwaZulu-Natal was designed by Bruce Fyfe. Although the bathroom is a modern open-plan design, folding shutters can be closed to create a completely private area or opened to provide a view of the garden and sea. The long, rather narrow space (5 x 2,5m) has a large shower the width of the bathroom at the far end. The bath and vanities, with storage underneath, are opposite each other. The mechanism for the wall-hung toilet is hidden behind a dry wall, which becomes a narrow ledge where candles or small vases can be placed. Above this is a lovely artwork by Coral Spencer Domijan from the Elizabeth Gordon Gallery.

A large mirror placed horizontally above the bath reflects the two large mirrors hung vertically above the handbasins, creating the illusion of space. All the mirrors are from the Elizabeth Gordon Gallery, the cabinetry is by Cole's Kitchens and the taps and showerheads are quality Grohe products.

TEXT COBAKODELITSC PHOTOGRAPHS SALLY CHANCE ASSISTANT KHULEKANI SHEZI



SOURCES
Colonial House Design 021 421 1467
Sterlings 021 804 3487

COLONIAL SPLENDOUR

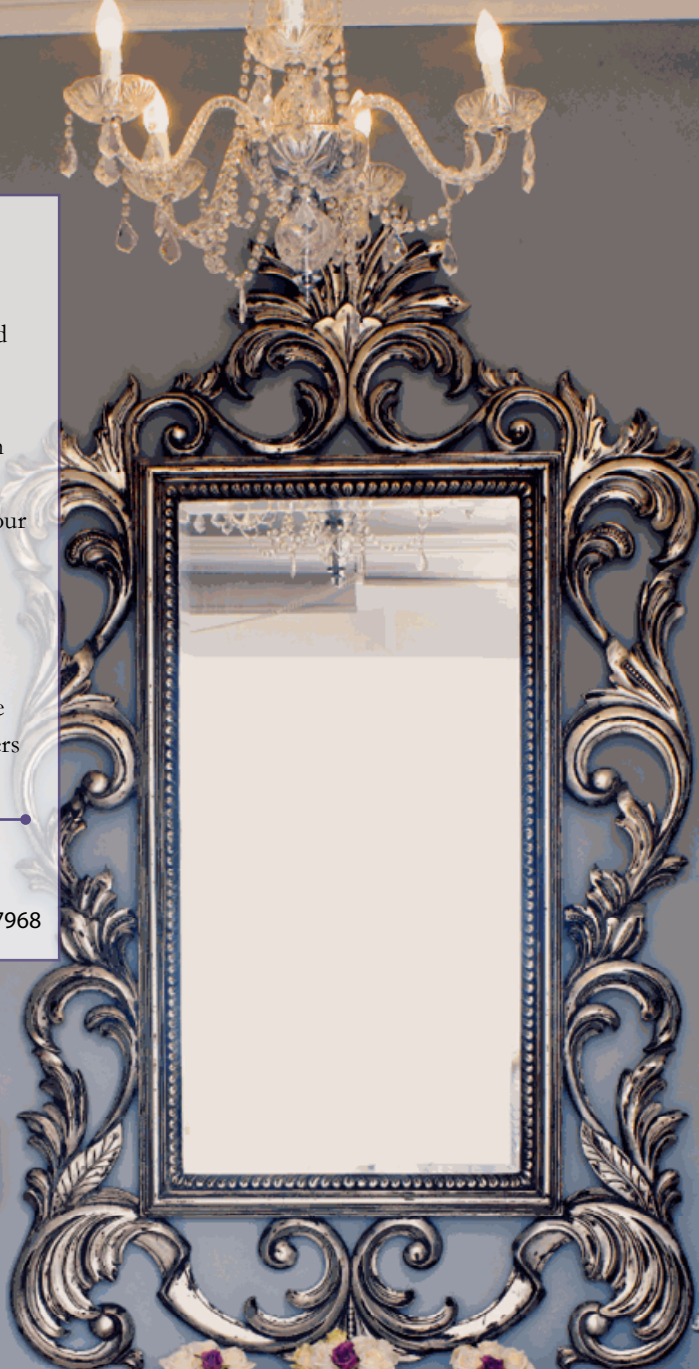
A slipper bath and a chandelier add an old-fashioned charm to this bathroom in a period home in Morningside, Durban. Designed by Lisa Walters, the bathroom opens onto a veranda through French doors and the bath was placed to enjoy the view over the sea.

The walls were coated with Earthcote, colour Highveld Storm, to offset the magnificent pewter-framed mirror and to contrast with the white bath and fittings. The taps are cleverly positioned on a shelf underneath the mirror and the hand shower on the left of the bath. This shelf also provides space for flowers and bathing essentials. ▷

SOURCES

Earthcote www.earthcote.co.za

Lisa Walters Interiors 083 703 1199 or 031 312 7968



WHITE FROSTING

Interior designer Ilze Swart made use of the generous natural light this Johannesburg bathroom receives and has created a space with a slick, clean feel. The bath was placed under the window and the large shower given a frameless enclosure to emphasise the sense of space. At one end of the bathroom, narrow glass shelves backed with a clear mosaic glass tile provide storage for towels and toiletries. Ilze originally wanted to use imported, tinted glass for the vanity doors, but found this to be too expensive so she opted for semi-frosted Perspex, the back of which was painted. The antique chair, covered in white towelling, and the vintage light fitting, keep the room from being too contemporary and give it a unique look and feel. **GEH**

SOURCE

Ilze Swart Design 082 859 5430

